



marrekrite  
wandelen

**Studytour Walking Tourism**

**2 June 2017**



marrekrite  
varen



marrekrite  
fietsen



marrekrite  
wandelen

# Recreatieschap Marrekrite

recreatieschap  
marrekrite

- Corrie de Groot
- Coordinator Landrecreation at Recreatieschap Marrekrite

## Subjects:

- Governmental role in walking trails
- Development and maintenance walking trails



# Our tasks

- Since 1957
- Development and Maintenance of recreational facilities
  - 3500 Moorings
  - 50 Marbuoys
  - 2711 km Cycle Junction network
  - 3175 km Walk Junction network
  - Recreational transition points (TOP)
- Small, but fast growing organisation

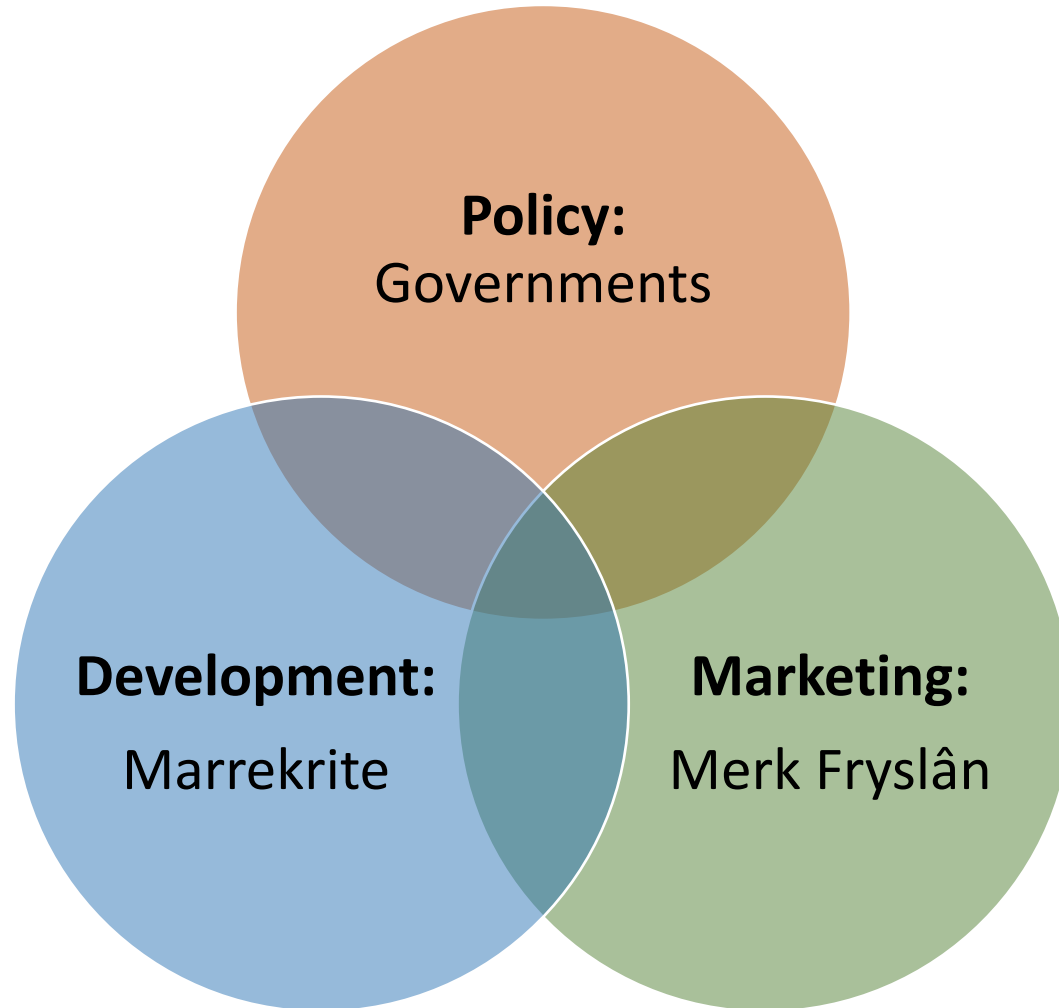


# Our organisation

- Governmental organisation
- ‘Gemeenschappelijke regeling’
  - Province of Fryslân
  - 19 Frisian municipalities
- Executive board / General Board
- Responsibilities:
  - Development: province and municipalities
  - Maintenance water: province and municipalities
  - Maintenance land: municipalities

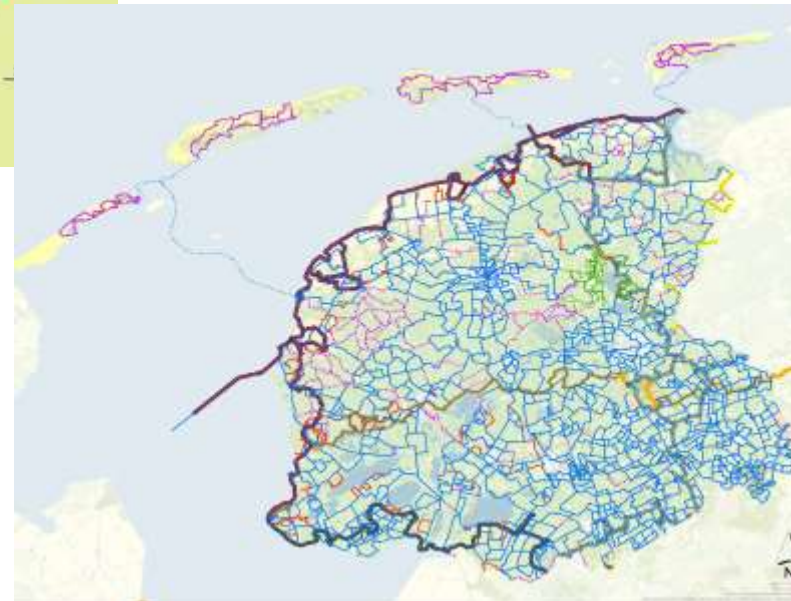


# Tourism Triangle



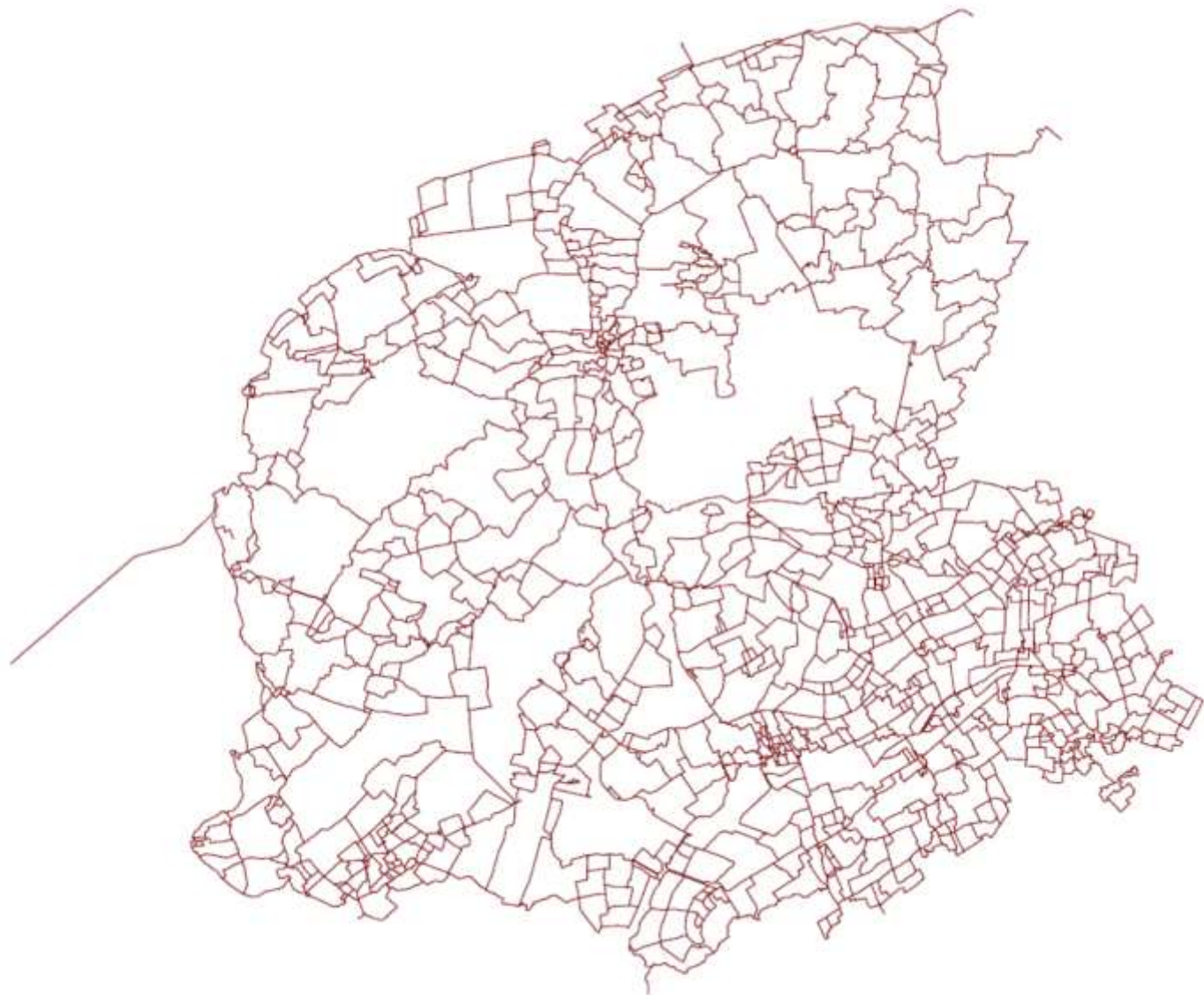
# Walking network

- National
  - Long Distance Trails
  - Wandelnet
- Provincial
  - Walking network
  - Junctions
  - Synchronised with Long Distance Trails



# Junction network

recreatieschap  
marrekrite



marrekrite  
varen



marrekrite  
fietsen



marrekrite  
wandelen

# Preconditions

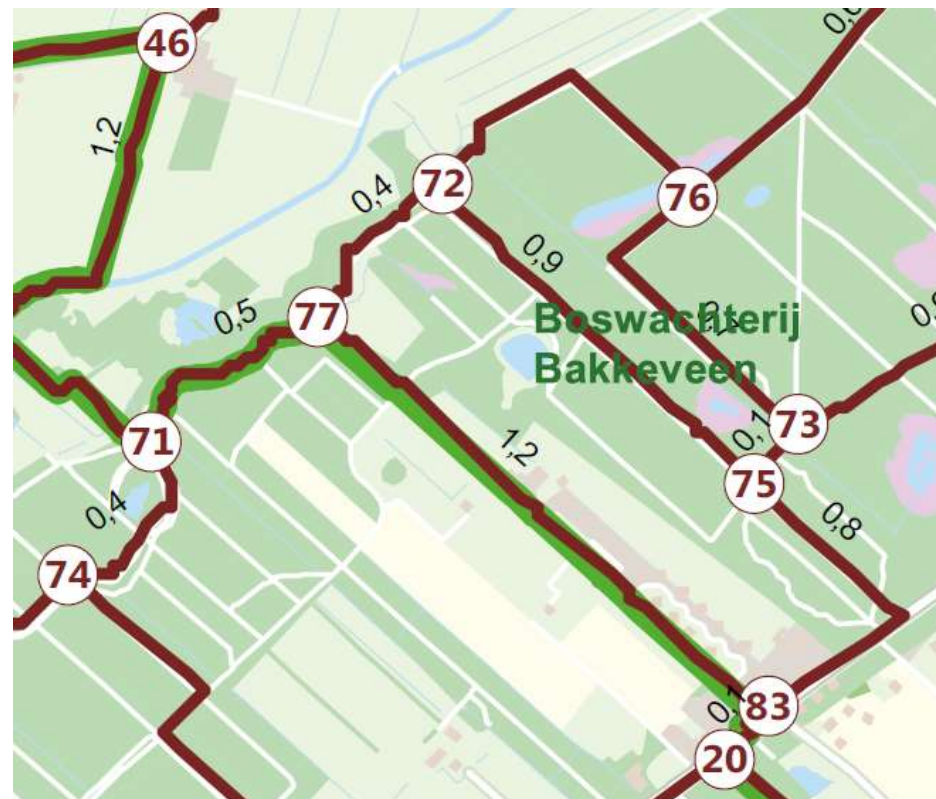
- Network
  - Density based on landscape type
  - Synchronisation with existing routes (local, regional, national)
  - Integration/removal of existing routesigns
  - Over existing, and public paths
- Attractiveness
  - Variety in landscapes
  - Priority in paths: 1. footpaths, 2. cycle paths, 3. small roads
  - Safe roads
  - Via touristic, attractive places
  - Via cultural, historic and touristic objects and facilities
  - Sufficient resting points: from picknick bench to horeca
  - Suitable for a variety of target groups





# What is it?

- Network of junctions
- Connects the best walking paths and roads
- Every junction has a number (1-99)
- On a map: lines show which junctions are connected
- In the field: signposted in both directions
- Choose the numbers to follow
- Route can easily be changed on each junction



# Signposting on junctions



# Route signs

recreatieschap  
marrekrite



# Information Panels

recreatieschap  
marrekrite



# Development

- Inventarisatie
  - Paths and roads
  - Existing routes
- Connection of the paths as a network
- Fieldwork: what kind of signposting is needed where
- Permission of landowners
- Execution of the network



# Maintenance

- Paths: landowner
- Signposting: Recreatieschap Marrekrite
- Inspection
- Occasional damage
- Adjustments
  - Necessary
  - Wishes

