



LLI-10 Introducing nature tourism for all **UniGreen**



Interreg

Latvija-Lietuva

European Regional Development Fund



EUROPEAN UNION

PP6

Klāvs Svilpe
Kuldīga municipality

06.06.2017.

www.kuldiga.lv



twitter.com/kuldigasnovads



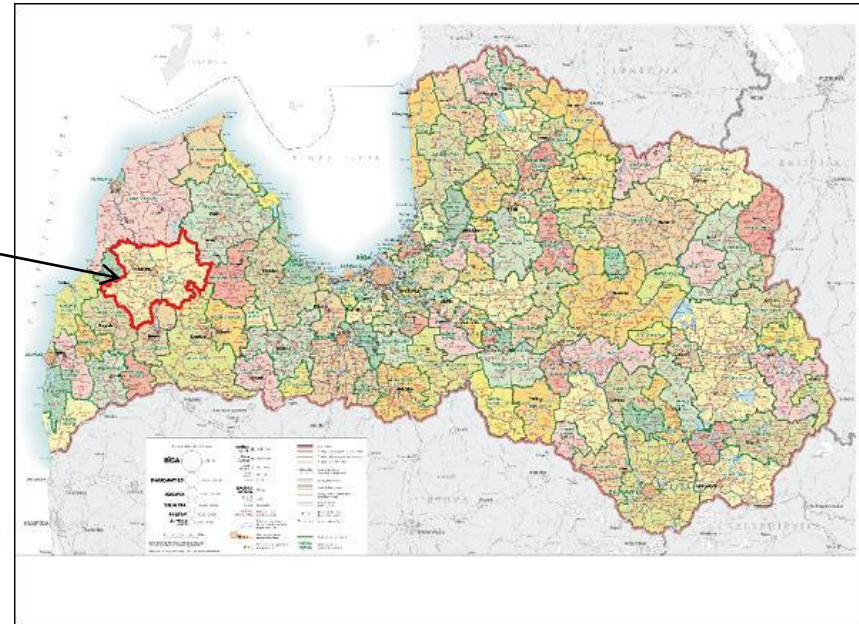
www.draugiem.lv/kuldigasnovads



www.facebook.com/kuldiga.tourism



Kuldīga municipality



KULDIGA MUNICIPALITY IS SITUATED IN THE WESTERN PART OF LATVIA, GEOGRAPHIC CENTER OF KURZEME REGION. DISTANCE TO THE CAPITAL CITY RIGA – 155 km

www.kuldiga.lv



Kuldīga municipality

Number of inhabitants in municipality 24 539, of which 11492 in Kuldīga town

Territory 1756 km²

Kuldīga Municipality is composed of 14 territorial units – Kuldīga town and 13 rural parishes



www.kuldiga.lv

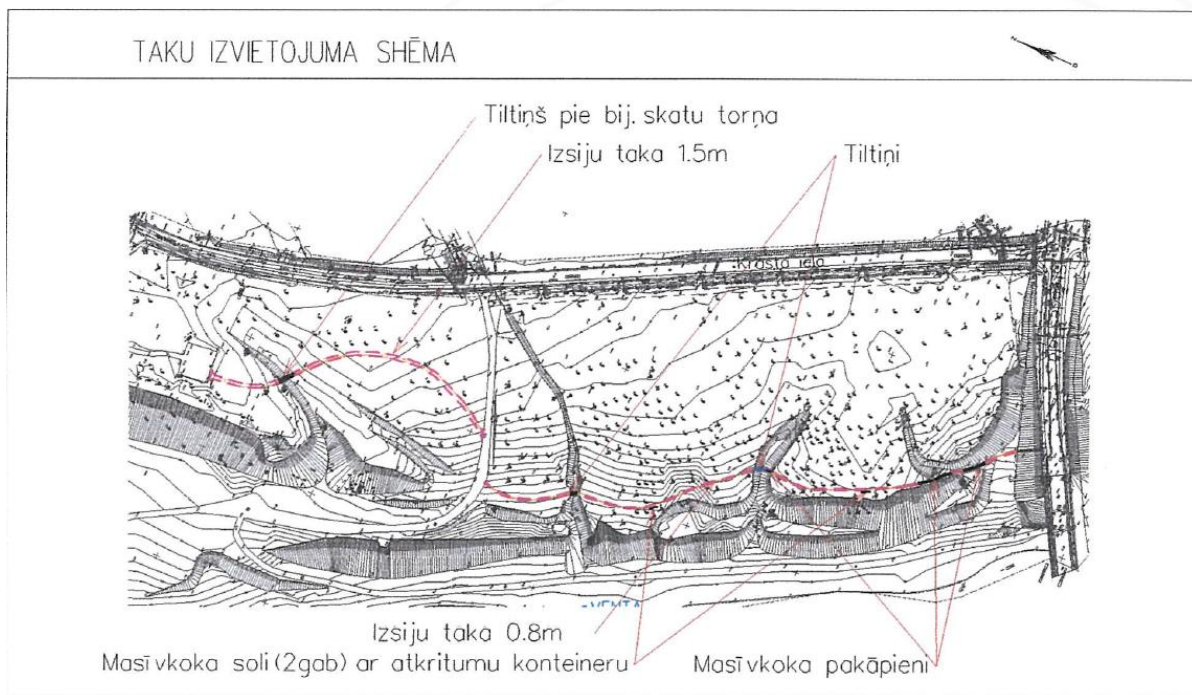


Project activities

Activity: 370m long trail along Venta river in Kuldīga

Delivery month: June 2018

Costs: EUR 57989,92



www.kuldiga.lv



Connection with other projects

ERDF Project Nr. 5.4.1.1/17/A/030 - *Decrease of anthropogenic load in Nature Reserve "Venta valley" by developing quality tourism and informative nature infrastructure network*

The trail connects the old town and old brick bridge with planned View Tower



www.kuldiga.lv