



LLI-010 "Introducing nature
tourism for all" / UniGreen

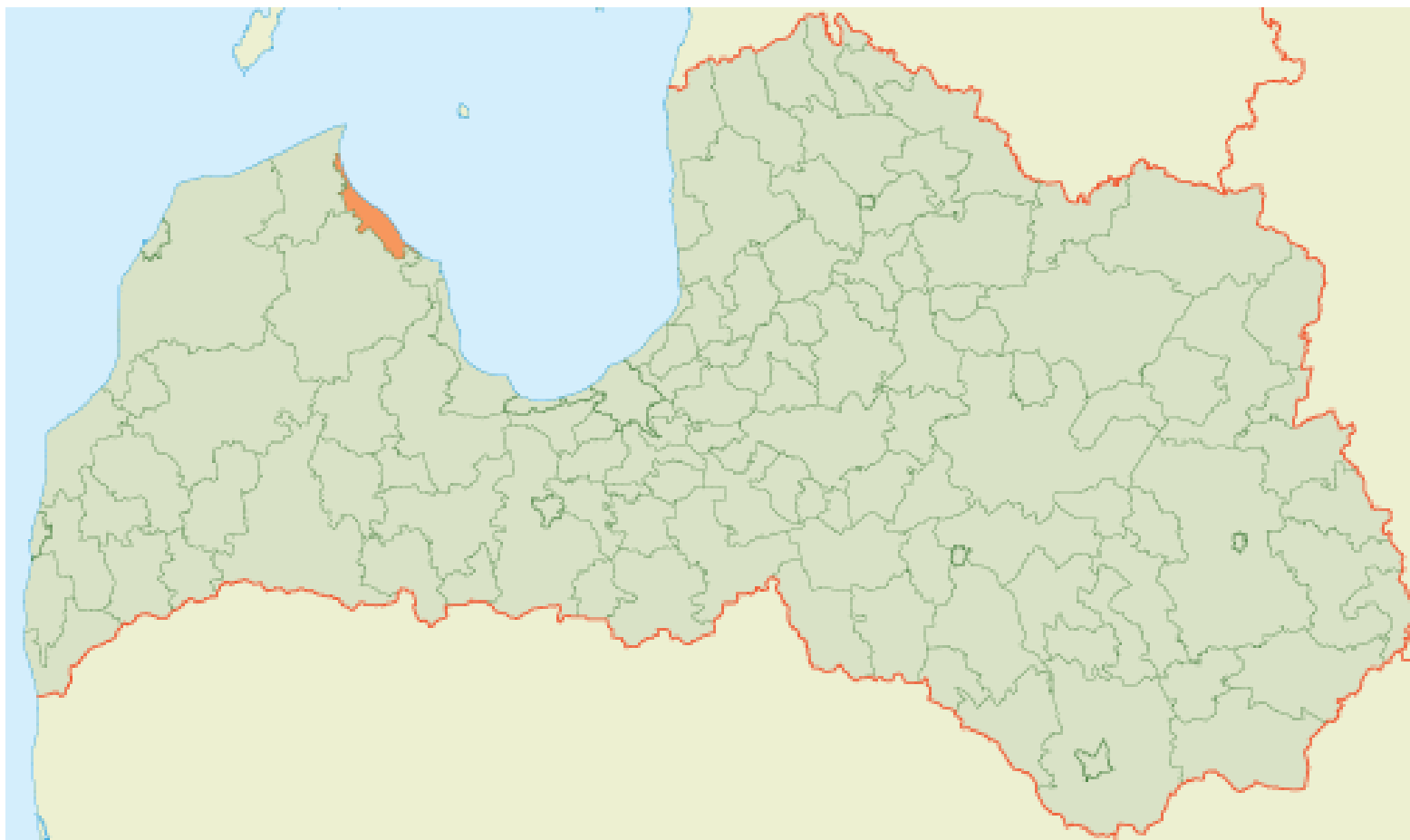
Trail along seaside

ROJA

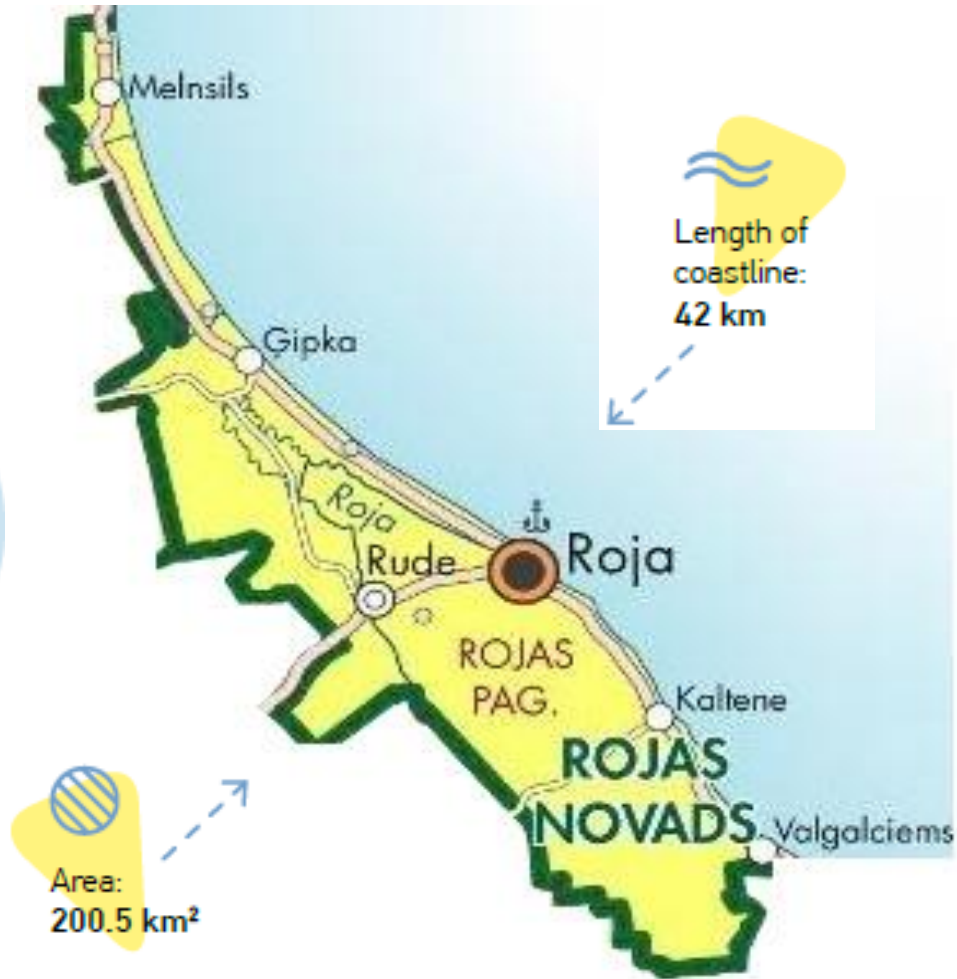
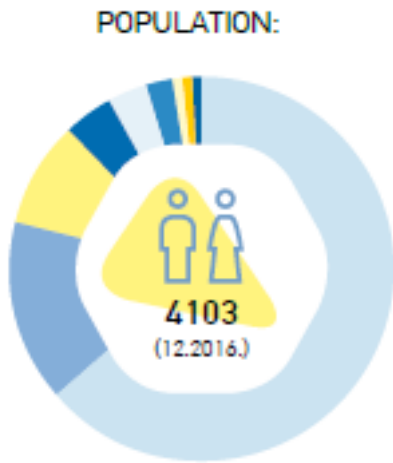


06.06.2017.

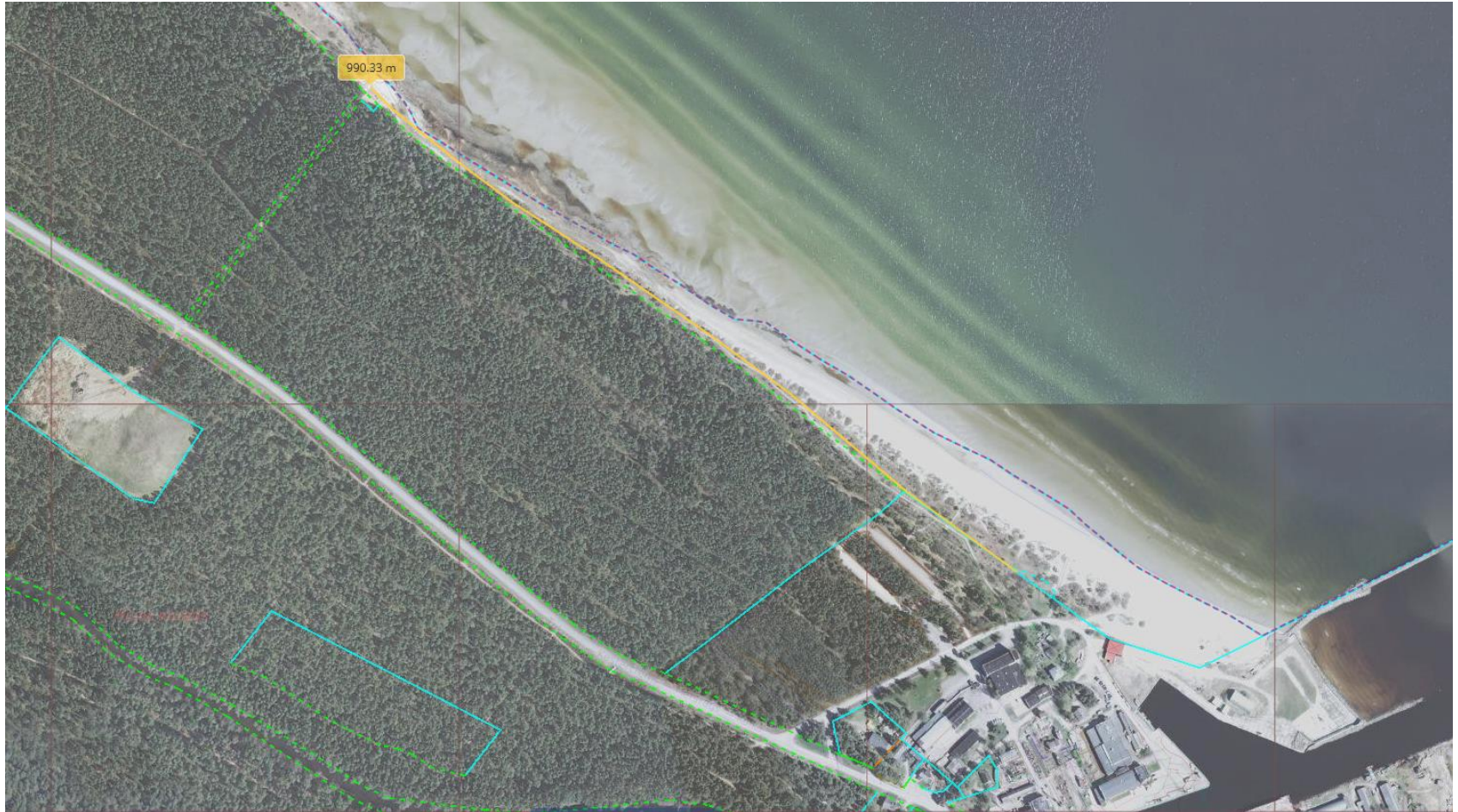
Latvija



District of Roja



Trails location in beach of Roja



Trails current situation



Experts opinion of trails area

Experts opinion on the plant species and biotope research in Rojas county beach and conclusions:

1. Identified protected biotopes in the territory:

- In the EU and Latvia specially protected biotopes **1.8., 2180 Forested coastal dunes** (has not been detected overlapping with biotope 1.17., 9010* **Old or natural boreal forests**),
- **6.6., 2130* With vascular plants covered gray dunes;**
- EU importance protected biotope: **2120 Foredunes.**



Beach - washed embryonic dunes.



2. In the inspected area there have not been found plant species, which are mentioned in the Cabinet of Ministers Regulations No. 396; in regulation No. 940 „Regulations on micro-reserves establishment and management procedures, their protection, as well as micro-reserves and their buffer zone identification”; And are not found plant species, which would be included in the Latvian Red Book and EP Species and Biotopes Directive II annex.



Existing trail along the forest biotope 6.6., 2130* **With vascular plants covered gray dunes.**



3. The planned volume of economic activity does not significantly exceed the current amount of utilities, which provide recreational load prevention in specially protected biotope area.



View of the forest zone and the grey dunes biotope at the trails end part..



4. In order to improve biotope **6.6., 2130*** **With vascular plants covered grey dunes**, it is recommended leaving certain pines and cut out the latest and fastest growing trees.



Overgrown grey dunes.



Decision of the State Environment Service Ventspils regional environmental board

*Not to apply the environmental impact procedure for coastal territory
in Rojas county.*



Construction project

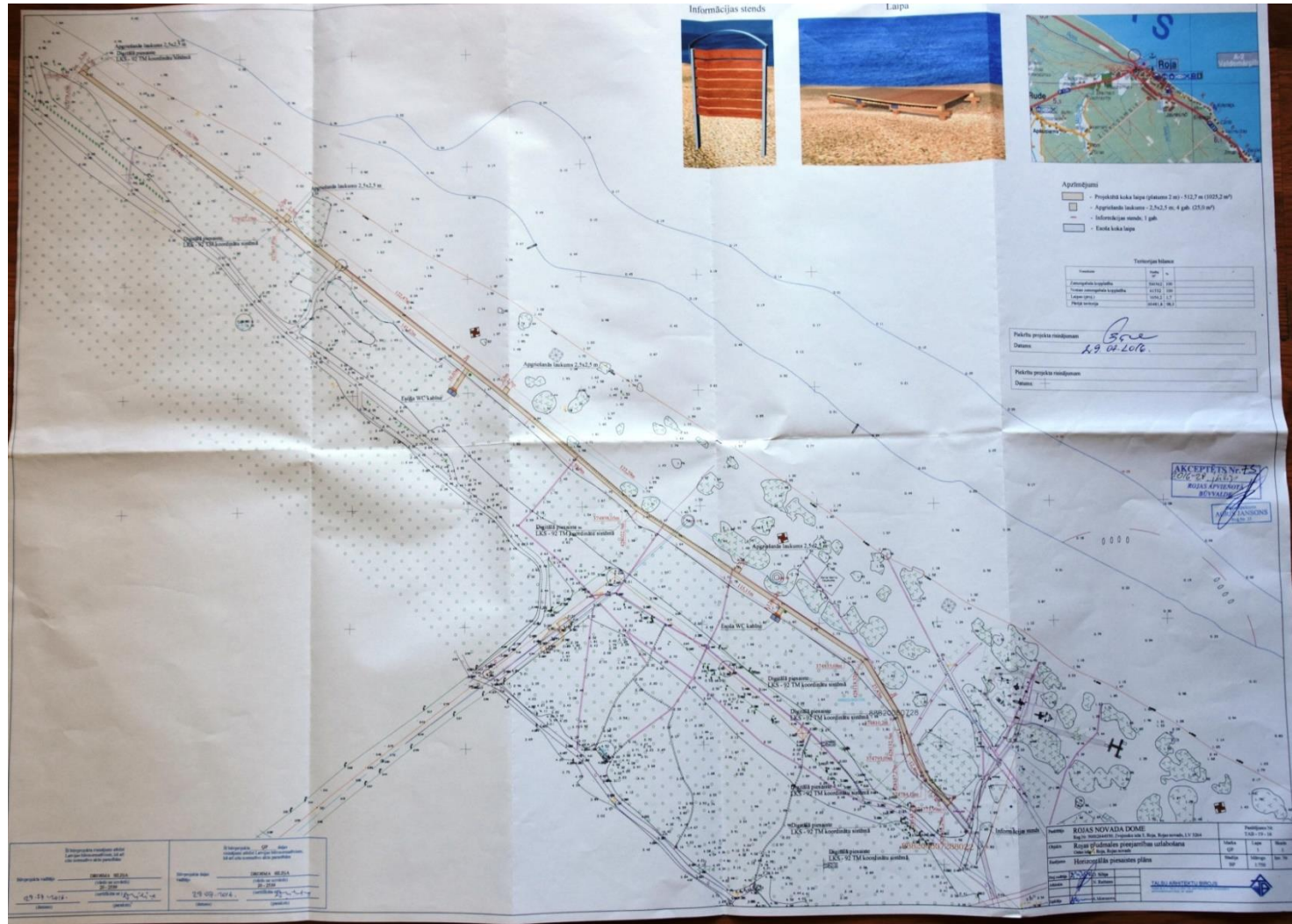
Developed and approved construction plan, by the SIA "Talsu arhitektu birojs»

Scope of the works in construction plan:

- Preparation for the start of construction;
- General construction works to improve access to the beach (boardwalk, turning squares, information stands)



Result of the project



Result of the project

- Reconstruction of existing boardwalk and prolong boardwalk, total length 980m long
- In the result of project will significantly improved Roja beach dune protection area and beach availability
- It will reduce the anthropogenic load in dune protection area;
- Planned activities will ensure favourable protection and preservation of these specially protected biotopes.



THANK YOU!

