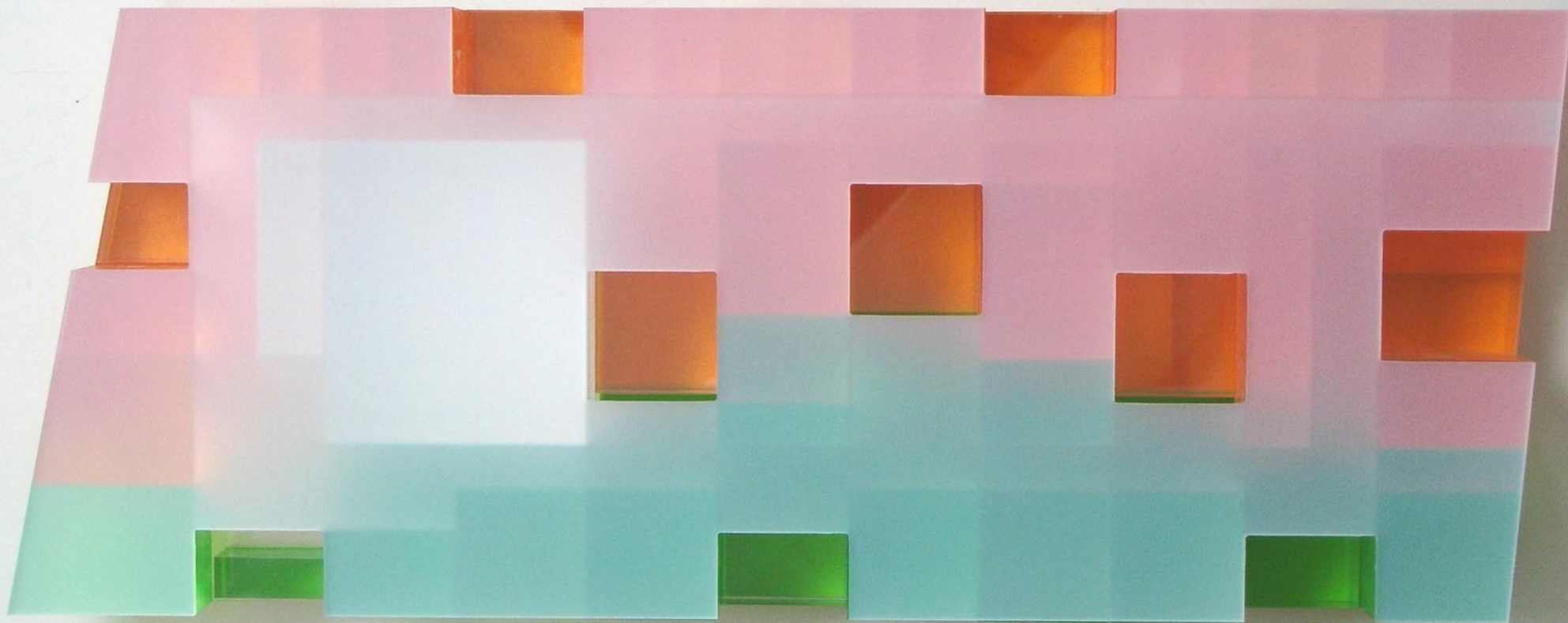


**Miķelis Putrāms, founding partner, MADE  
arhitekti**

**LLI - 303 "Clean Brownfields",  
Kalni, Nīgrande, Saldus county, 22.01.2020."**























**IDEA**

**IDEA**



**MATERIALIZING**



**IDEA**



**MATERIALIZING**



**TESTING**

**IDEA**



**MATERIALIZING**



**TESTING**



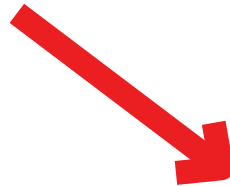
**DECISION**



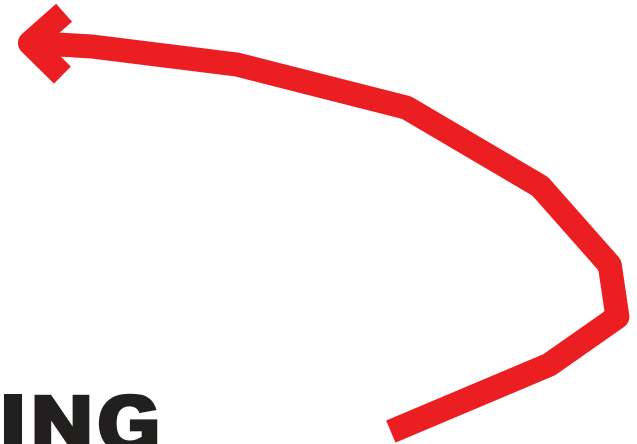
**IDEA**



**MATERIALIZING**



**TESTING**

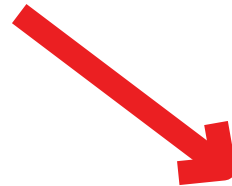


**DECISION**

**IDEA**

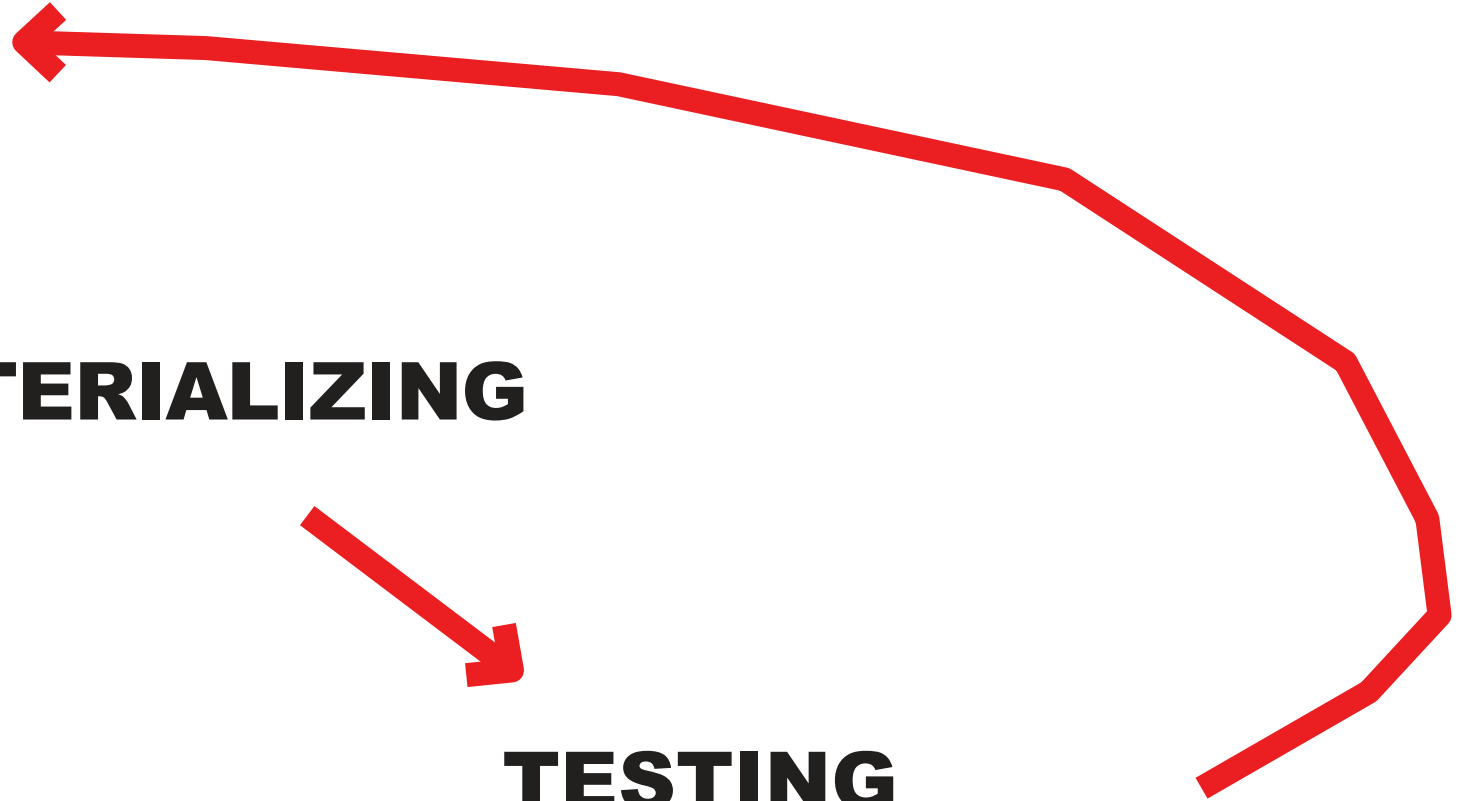


**MATERIALIZING**



**TESTING**

**DECISION**





**IDEA**



**MATERIALIZING**



**TESTING**

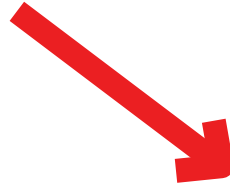


**DECISION**

**TASK**



**DESIGN**

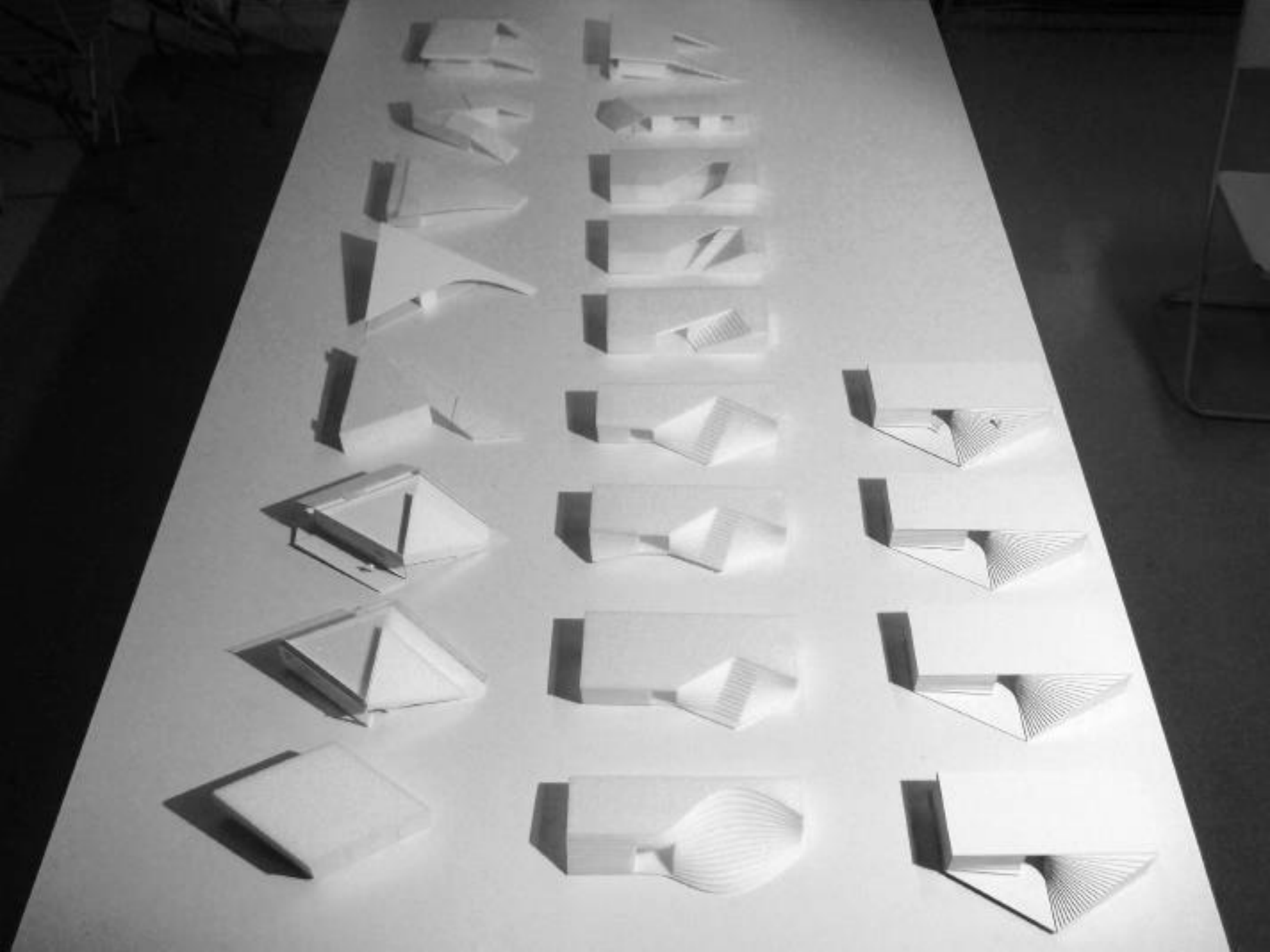


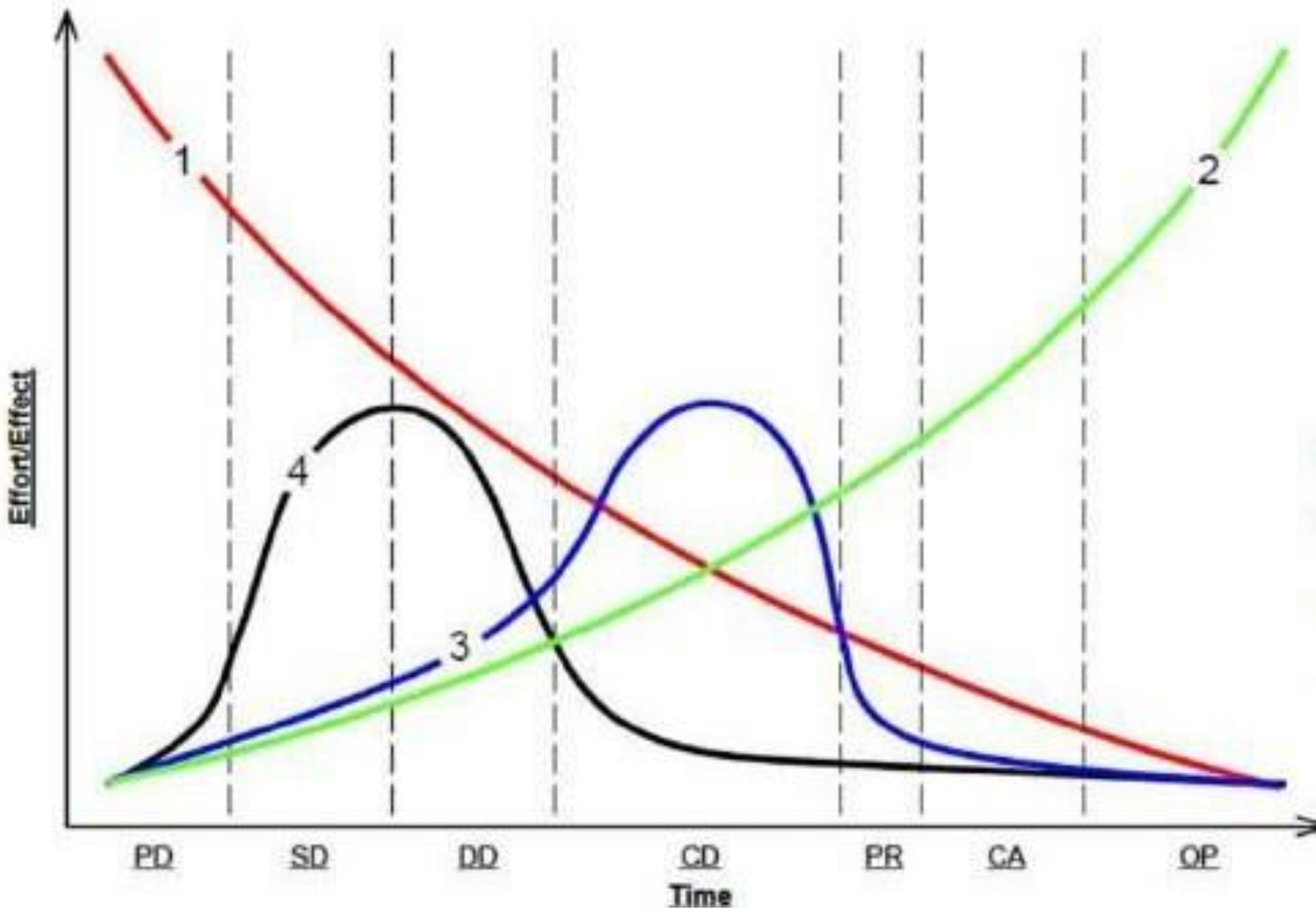
**EVALUATION**



**CONSTRUCTION  
(PRODUCTION)**









# Chapter 1: Charrettes for High-Performance Projects

Understanding the difference between a workshop and a charrette and knowing a charrette's expected benefits and outcomes are important first steps in the charrette process. It is also important to determine if the project is sufficiently developed to benefit from a charrette. In this chapter, we answer basic questions about charrettes and give guidance about whether your project is ready for the charrette process.

## What Is a Charrette?

A charrette is a creative burst of energy that builds momentum for a project and sets it on a course to meet project goals. It can transform a project from a static, complex problem to a successful, buildable plan. Usually, it is an intensely focused, multiday session that uses a collaborative approach to create realistic and achievable designs that work.

Charrette planners and facilitators use strategic planning to overcome conflict. Part of their strategy is to focus on the *big picture* and the *details* of a project to produce collaborative agreement about specific goals, strategies, and project priorities. Charrettes establish trust, build consensus, and help to obtain project approval more quickly by allowing participants to be a part of the decision-making process.

**charrette** (shar-ette') *n.* 1. A small cart. 2. A collection of ideas. During the 19th century, students of l'École des Beaux Arts in Paris would ride in the cart sent to retrieve their final art and architecture projects. While en route to the school in the cart, students frantically worked together to complete or improve these projects. The meaning of the word has evolved to imply a collection of ideas or a session of intense brainstorming. 3. An intensely focused activity intended to build consensus among participants, develop specific design goals and solutions for a project, and motivate participants and stakeholders to be committed to reaching those goals. Participants represent all those who can influence the project design decisions. [Fr. *charrette*]

## Charrette Benefits

As a building project moves from inception to completion, it passes through predesign, conceptual design, and design development phases. As the design process continues, more decisions are made about the final building design (Figure 1).

Charrettes are most useful during the predesign phase—before important design decisions for the building form, fabric, and equipment are finalized. The benefits of using charrettes



## CHALLENGES

---

- ZONING OF FUNCTION
- UNIFYING BUILDINGS
- FRIENDLY INFORM LEARNING ENVIROMENT
- ORIENTATION AND ACCESSIBILITY
- WELCOMING ATMOSPHERE
- IMAGE OF RBS



WHILE MAINTAINING  
HISTORICAL VALUES OF  
BUILDING

## PROBLEMS

---

- SMALL ENTRANCE
- LACK OF LIGHT/AIR PERCEPTION OF SPACE
- UNUSED COURTYARD
- COMPLICATED CONNECTIONS/ CONFUSION
- UNUSED TERRACES



## CHALLENGES

---

- ZONING OF FUNCTION
- UNIFYING BUILDINGS
- FRIENDLY INFORM LEARNING ENVIROMENT
- ORIENTATION AND ACCESSIBILITY
- WELCOMING ATMOSPHERE
- IMAGE OF RBS



WHILE MAINTAINING  
HISTORICAL VALUES OF  
BUILDING

## PROBLEMS

---

- SMALL ENTRANCE
- LACK OF LIGHT/AIR PERCEPTION OF SPACE
- UNUSED COURTYARD
- COMPLICATED CONNECTIONS/ CONFUSION
- UNUSED TERRACES



# ALUMNI AUDITORIUM

---

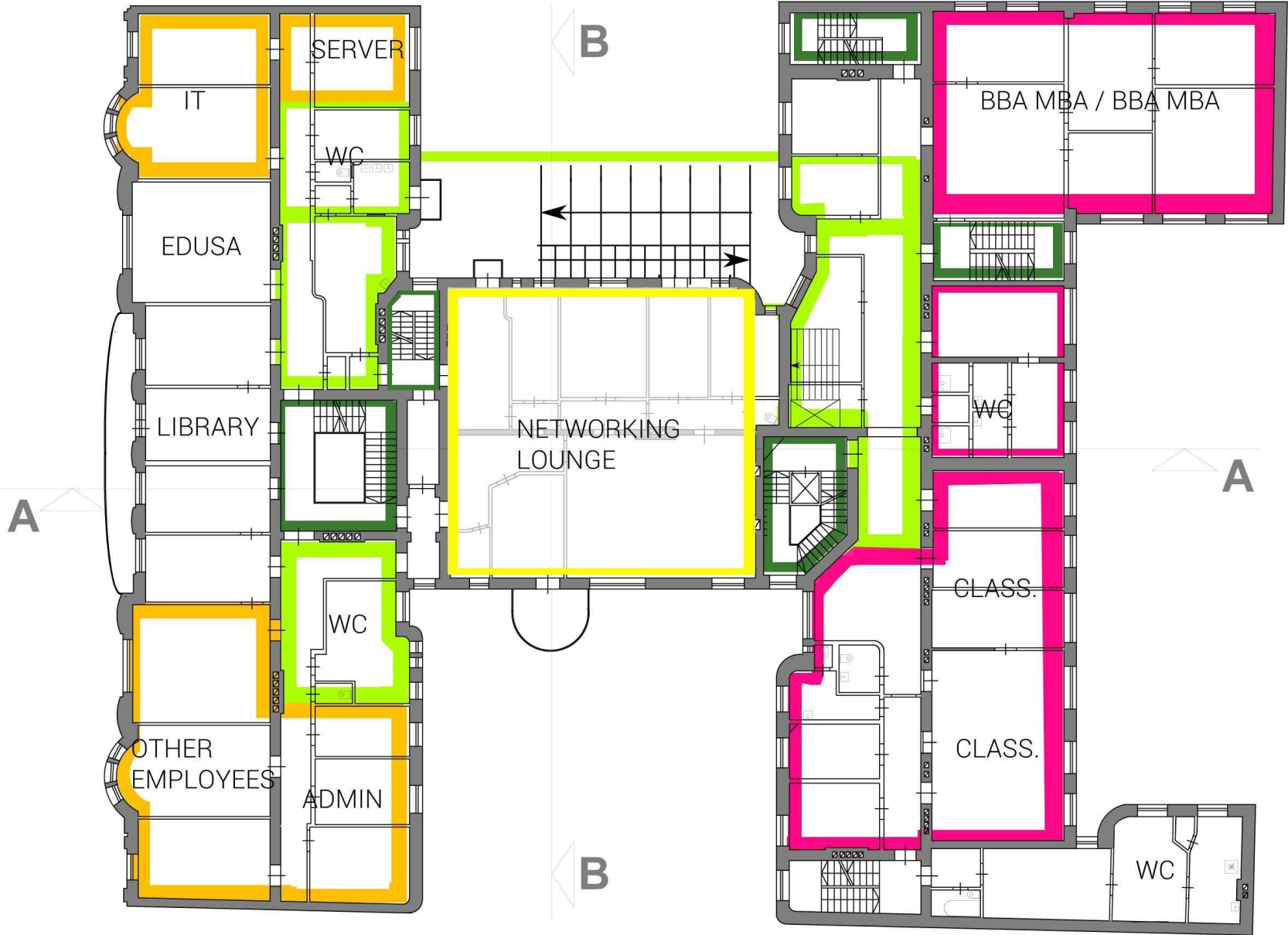


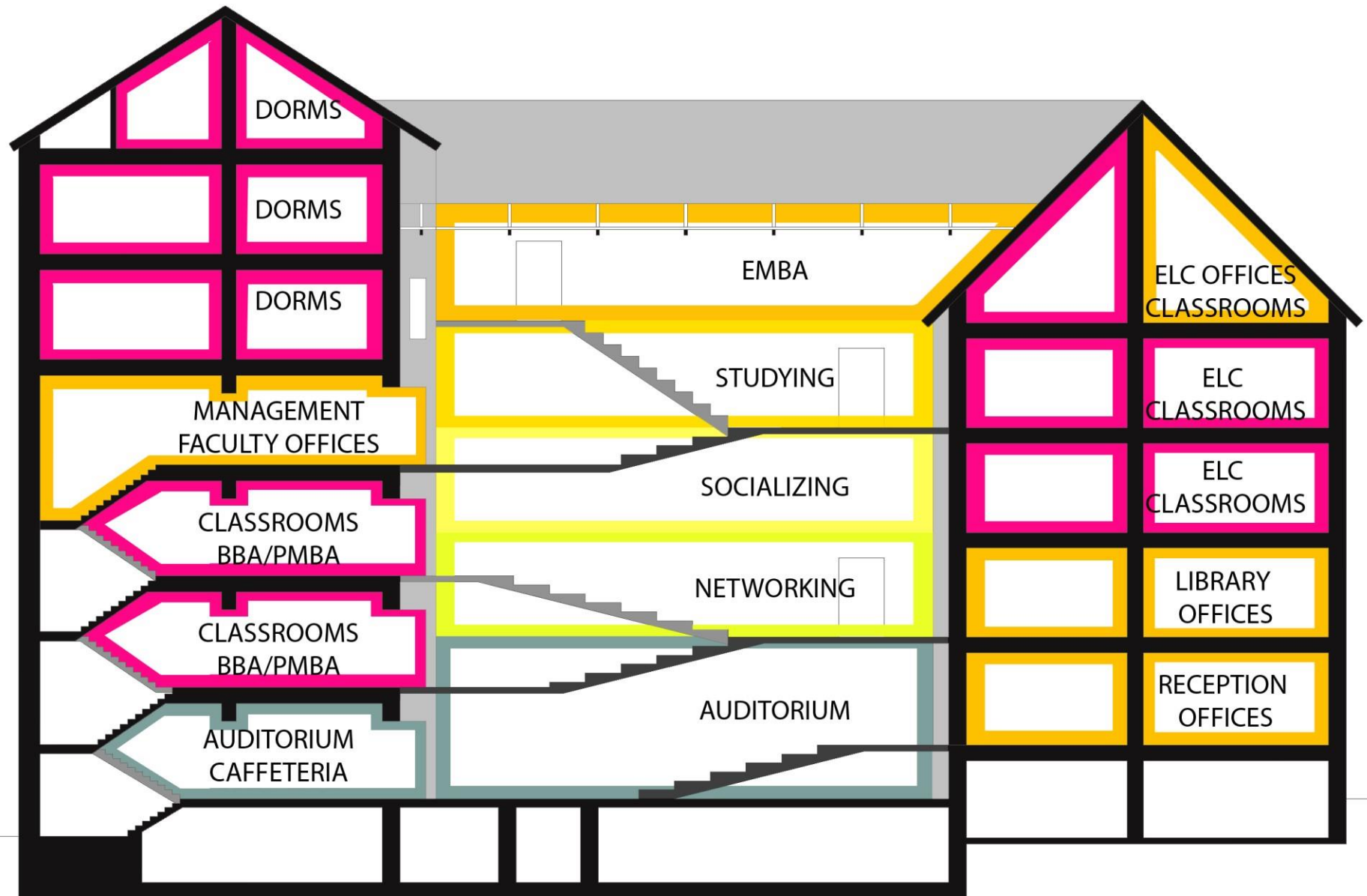
- NEW TECHNOLOGIES
- LOT OF MONEY SPEND
- FIT REQUIREMENT HEIGHT
- REALITY
- CENTRE OF SCHOOL



- BLOCKED COMMUNICATION AND CIRCULATION ON THE GROUND FLOOR

FLOOR 2





NEW LIGHT WEIGHT  
STRUCTURE

EXISTING  
FOUNDATIONS

